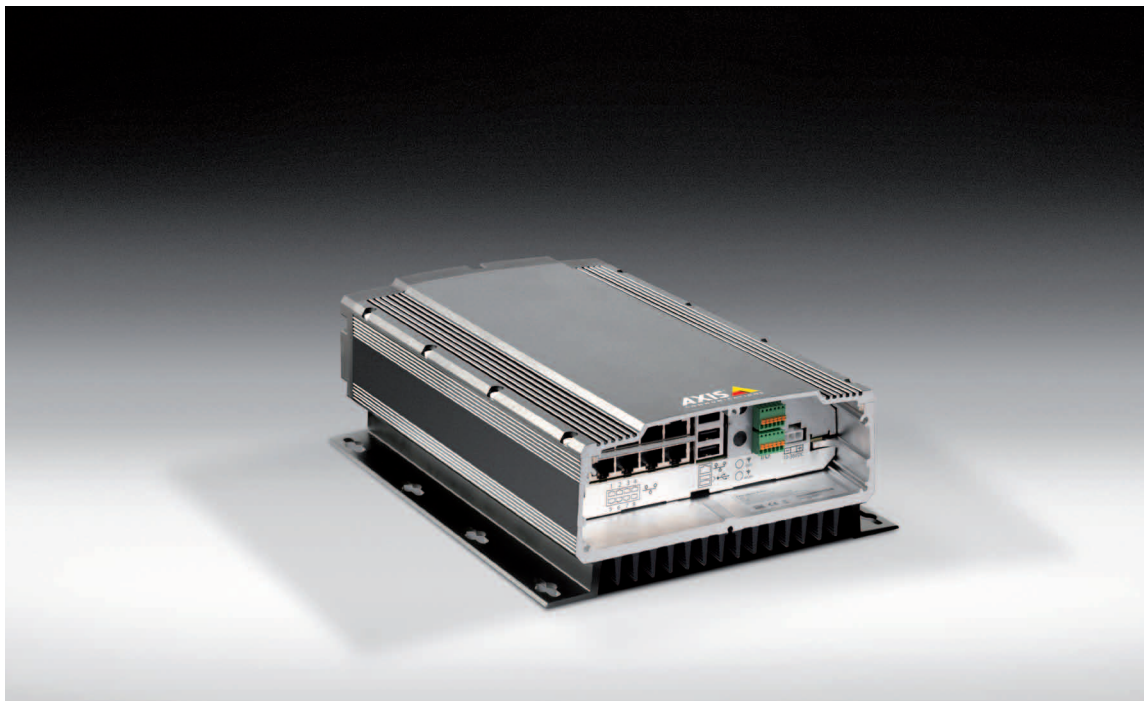


AXIS Q8108-R Network Video Recorder

Uninterrupted in-vehicle recordings for tough environments.



- > Rugged design
- > Easy installation
- > 8-port PoE switch
- > Battery back-up

AXIS Q8108-R is an 8-channel network video recorder especially designed for public and commercial transportation applications. The product is developed to withstand shocks, vibrations and temperature fluctuations. It provides uninterrupted in-vehicle recording in full frame rate HDTV resolution for up to 8 connected cameras.

The product is tested according to prevailing shock and vibration standards. The electronic components are protected by a robust aluminum casing, which upon request can be supplied with a cable sealing to meet an IP65 rating.

The integrated 8-port PoE switch offers an easy, fast and cost-effective solution for supplying power to network cameras.

AXIS Q8108-R is equipped with battery backup to handle short periods of power drop and safe shutdown of the system. Integrated voltage protection eliminates voltage spikes that may occur in a vehicle's power system.

AXIS Q8108-R supports the use of up to 2 separate hard disk drives. SATA connectors make it easy to replace hard disk drives when needed.

AXIS Q8108-R includes an 8-channel version of AXIS Camera Station video management software.



Technical Specifications – AXIS Q8108-R Network Video Recorder

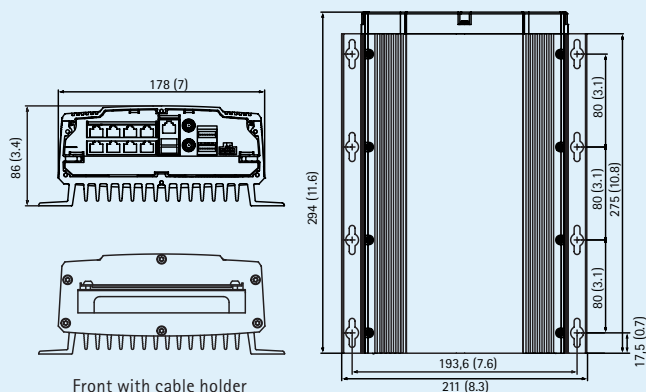
System	
Models	AXIS Q8108-R: hard disk not included
Processor	1.1 GHz Intel Atom Z5 series CPU
RAM	1 GB SODIMM DDR2
System disk	Compact Flash SSD drive 4 GB
Operating system	Windows Embedded Standard 2009
Battery backup	Safe shutdown 1 minute after power loss
Network	
Security	Password protection, user access log
NTP	NTP server included
Software	
Video Management Software	AXIS Camera Station, 8-channel license included. For more information, see www.axis.com/products/cam_station_software/
Supported cameras	Axis cameras only, see complete list at: www.axis.com/products/cam_station_software/supported.htm
Application Programming Interface	Open API for software integration
Video compression	H.264 (MPEG-4 Part 10/AVC), MPEG-4 Part 2, Motion JPEG
Audio compression	AAC, G.711, G.726
Resolutions	Supports connected Axis video product resolutions*
Recording frame rate	Supports connected Axis video product frame rates*

*Maximum total recording bitrate 70 Mbps

General	
Casing	Rugged IP43-rated aluminum casing
Input voltage	12 or 24 V DC
Max power	84 W
PoE output	8 PoE class 1, or 1 PoE class 0 + 4 PoE class 1, or 2 PoE class 0
External connectors	2x Hi-Speed USB 2.0, Female RJ-45 Gbit port for external connection 8x Female RJ-45 10BASE-T/100BASE-TX PoE 2x digital output ports and 8x digital input ports
Internal connectors	2x SATA connectors and 2x Mini PCI Express
Hard disk drives requirements	SATA revision 1.0 (SATA 1.5 Gbit/s) and a sector size of 512 byte Hard disk drives shall have a SATA latching connector Usage of SSDs is strongly recommended
Operating temperature	-10 °C to 50 °C (14 °F to 122 °F)
Weight	3.7 kg (8.14 lb.)
Approvals	EU directive 2002/96/EC, MIL STD-810F Method 516.5 Procedure I, MIL STD-810F method 514.5, EN 55022, EN 55024, EN 61000-4-2, ISO 11452-2, EN 61000-4-3, ISO 11452-2, EN 61000-4-4, EN 61000-4-5, EN 61000-4-11, ISO 7637-2, EN50121-3-2, FCC part 15 subpart B class B
Included accessories	User's Guide, client software installation and management tools, cable holder, power cable, hard disk adapter kit

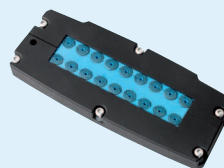
More information is available at www.axis.com

Dimensions mm (inch)



Optional accessories

Cable sealing for IP65 rating



Power supply



Recommended products

AXIS M31-R Network Camera Series



Other compatible products

AXIS Q8108-R is compatible with all Axis video products running firmware 4.30 or higher, excluding AXIS 206M and AXIS 206W.