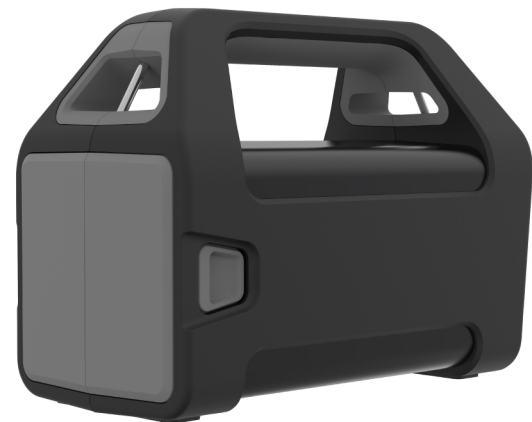


AXIS T8415 Wireless Installation Tool

Simplicity in your hand

AXIS T8415 Wireless Installation Tool is a battery-powered handheld device that connects directly to a camera and displays live video. With its powerful battery, the tool can power up an Axis PoE camera up to 30 W for hours. The built-in Wi-Fi function in AXIS T8415 connects within seconds to an installer's smartphone or tablet so the camera's live view can be accessed in a convenient manner. Basic camera functions, such as focus, IP address and image rotation can be adjusted via the smartphone. Free-of-charge app on the smartphone (iOS or Android) downloadable from the App Store or Google Play.

- > **Multiple camera discovery, including ONVIF**
- > **Native app for installation of Axis cameras**
- > **Wireless connection to any smartphone**
- > **Powerful battery**
- > **Support for PoE+**



AXIS T8415 Wireless Installation Tool

Network		
IP setting	Automatic or Manual configuration of IPv4 address	
Network connector	10BASE-T/100BASE-TX	
Wireless interface	IEEE 802.11b/g/n/ac 5 GHz (default) a/ac/n - Channels 36, 40 or 44 2.4 GHz b/g/n - Channels 1, 6 or 11	
Security	WPA2-PSK	
System integration		
Supported protocols	Axis products using Bonjour and ONVIF compatible products using WS-Discovery	
General		
Casing	Body: Material: PC ABS Color: Black Handle insert: Material: TPE Color: Dusty grey Battery module: Material: PC ABS Color: Dusty grey	
Power	PoE: Power over Ethernet Plus (PoE+) IEEE 802.3at Type 2 Class 4 USB: 5 V, 2.1 A Battery type: 12 V, 3.4 Ah, Lead-acid, VRLA	2.1 MM jack - Battery charger input on battery module. Centre positive
Connectors	RJ45 - PoE 10BASE-T/100BASE-TX RJ45 - non-PoE 10BASE-T/100BASE-TX USB Type A - Power only	
		Operating conditions 0 °C to 50 °C (32 °F to 122 °F) Humidity 20–80% RH (non-condensing)
		Storage conditions -30 °C to 70 °C (-22 °F to 158 °F) Humidity 20–80% RH (non-condensing)
		Approvals EMC EN 55032 Class A, FCC Part 15 Subpart B Class B, ICES-003 Class B, VCCI Class B, KCC KN32 Class B, KN35, RCM AS/NZS CISPR 22 Class B Safety IEC/EN/UL 60950-1, EN 62368-1, CE Environment RoHS, REACH, WEEE Wireless EN 300328, EN 301489-1, EN 301489-17, EN 301893, FCC Part 15 Subpart C, TELEC Battery: UL, IMDG, IATA, CE, ROHS, REACH, WEEE, ADR, ECHA, DoT
		Dimensions 150 x 100 x 205 mm (5 15/16 x 3 15/16 x 8 1/16 in)
		Weight Full unit: 2.2 kg (4.8 lb) Battery module: 1.6 kg (3.5 lb)
		Included accessories Carrying strap AXIS Installation Tool Battery 12 V 3.4 Ah AXIS Installation Charger Adaptor 12 V 1 A
		Optional accessories AXIS Installation Charger Adaptor 12 V 1 A AXIS Installation Tool Battery 12 V 3.4 Ah AXIS T8134 60 W Midspan (for High PoE cameras) AXIS Installation Bag
		Warranty 3-year warranty, see axis.com/warranty

AXIS Wireless Installation Tool application

System requirements	
Minimum requirements	iOS 7 or higher, Android 4.1 or higher
Supported devices	Axis products using Bonjour and ONVIF compatible products using WS-Discovery
Functionality	
Axis products	Discovery, Thumbnail, Live view, Rotate, Autofocus (dependent on device), Snapshot
ONVIF products	Re-direct to device home page for further settings
Settings	Network: Device IP-address settings (manually or automatically), subnet mask and default router Password: Change of password Power line frequency: 50 or 60 Hz Capture mode: Possible settings dependent on device Advanced settings: Other settings can be reached and done via the Advanced Setup link

Environmental responsibility:

axis.com/environmental-responsibility